



Partnering for Rural Research

**David Cook, PhD
Associate Vice Chancellor
KUMC Outreach**

**Mary Beth Warren, MS, RN
Statewide Director
Area Health Education Centers**

May 6, 2010



Why the time is right?

- Development of Institute for Community and Public Health
- Focus on NCI Designation
- Creation of Midwest Cancer Alliance

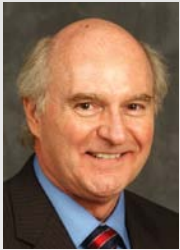


What is the Institute of Community and Public Health?

- Houses over 45 faculty members and researchers active in public health education and research
- Supports interdisciplinary clinical and basic science research in Medicine, Nursing, and Allied Health, and in the research centers and institutes of the Medical Center
- FY10 all funds budget of \$10.2 million including \$6.6 million in grants/ROV and a state general use allocation of \$2.6 million
- Holds over \$30 million in aggregate, all years grant support



ICPH Leadership



- **Douglas Bradham**
Professor and Chair
Preventive Medicine
and Public Health, Wichita

- **Megha Ramaswamy**
Assistant Professor
MPH Program Site Director
Preventive Medicine and
Public Health, Kansas City



- **Matthew Mayo**
Professor and Chair
Biostatistics



- **Ruth Wetta-Hall**
Assistant Professor
Vice Chair
Preventive Medicine
and Public Health, Wichita



- **Suzanne Hawley**
Assistant Professor
MPH Program Site Director
Preventive Medicine
and Public Health, Wichita



ICPH Leadership



- **Edward Ellerbeck**
Professor and Chair
Preventive Medicine
and Public Health, Kansas City

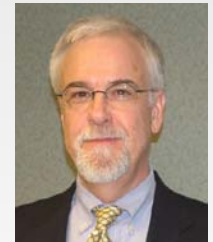


- **David Cook**
Associate Professor
Health Policy and Management
Associate Vice Chancellor for
KUMC Outreach

- **Won Choi**
Associate Professor
MPH Program Executive Director
Preventive Medicine
and Public Health, Kansas City



- **Anthony Wellever**
Assistant Professor
Family Medicine



- **Glen Cox**
Professor and Chair
Health Policy and Management



- **Marcia Nielsen**
Associate Professor
Health Policy and Management
Vice Chancellor for Public Affairs



The State of Public Health in Kansas

- A significant number of Kansas' public health workers have no formal public health training
- Many members of the public health workforce are nearing retirement
- Over 40% of Kansas' practicing public health professionals cite a need for additional training in one or more public health competency domains
- There are increasing demands created by emerging diseases, environmental hazards, and bioterrorism threats, which add to the routine tasks of disease surveillance, control, prevention and the operation of health inspection and sanitation services



Charges to the ICPH

- Train more public health professionals
- Enhance continuing education and certificate programs for professionals in practice
- Facilitate collaboration within university and with practice community
- Increase the competitiveness of the university and the state in garnering public health education, research and service funding
- Define the path to an accredited school of public health



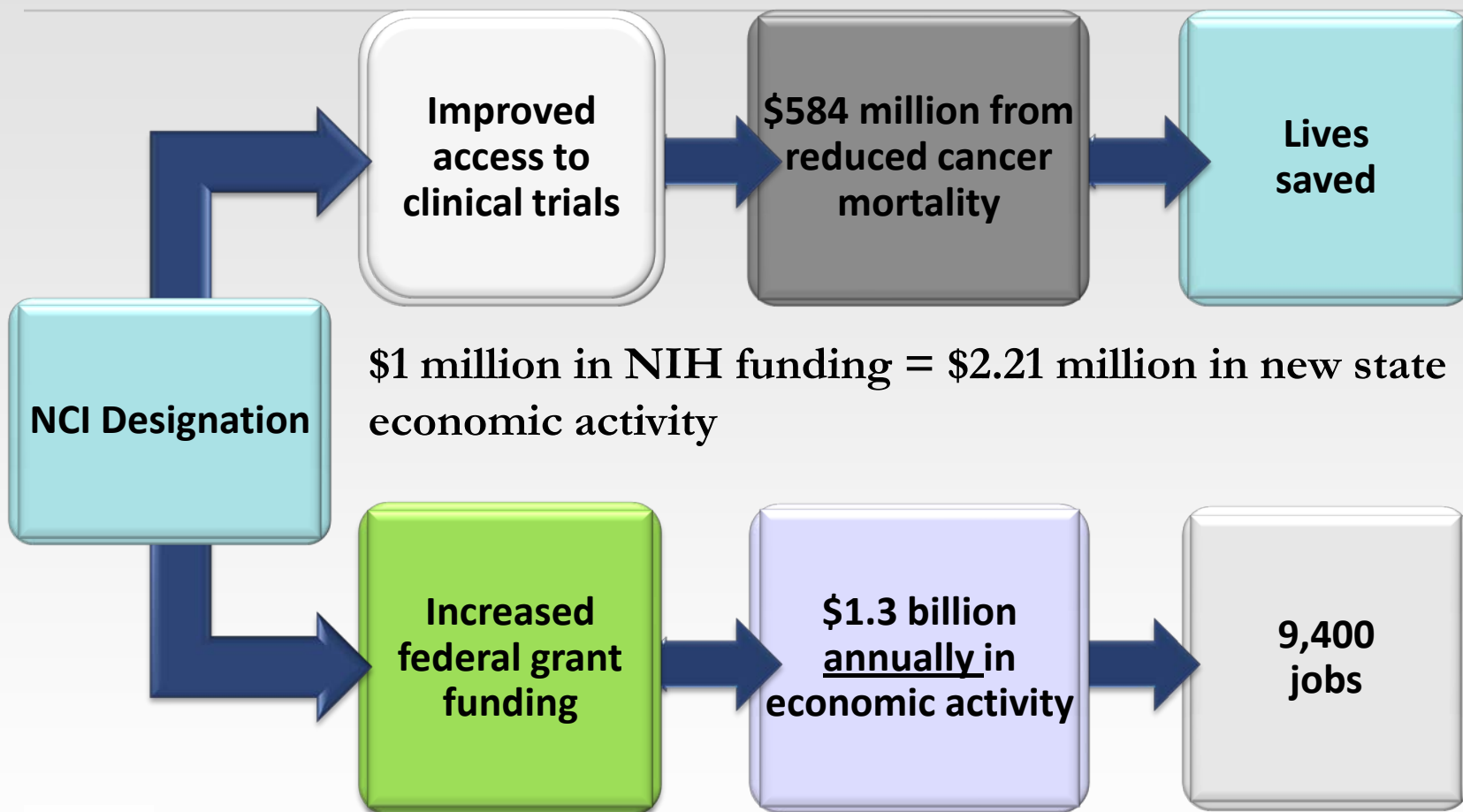
NCI Designation

NCI-Designated Cancer Centers are the Centerpiece of the Nation's effort to Reduce Morbidity and Mortality from Cancer

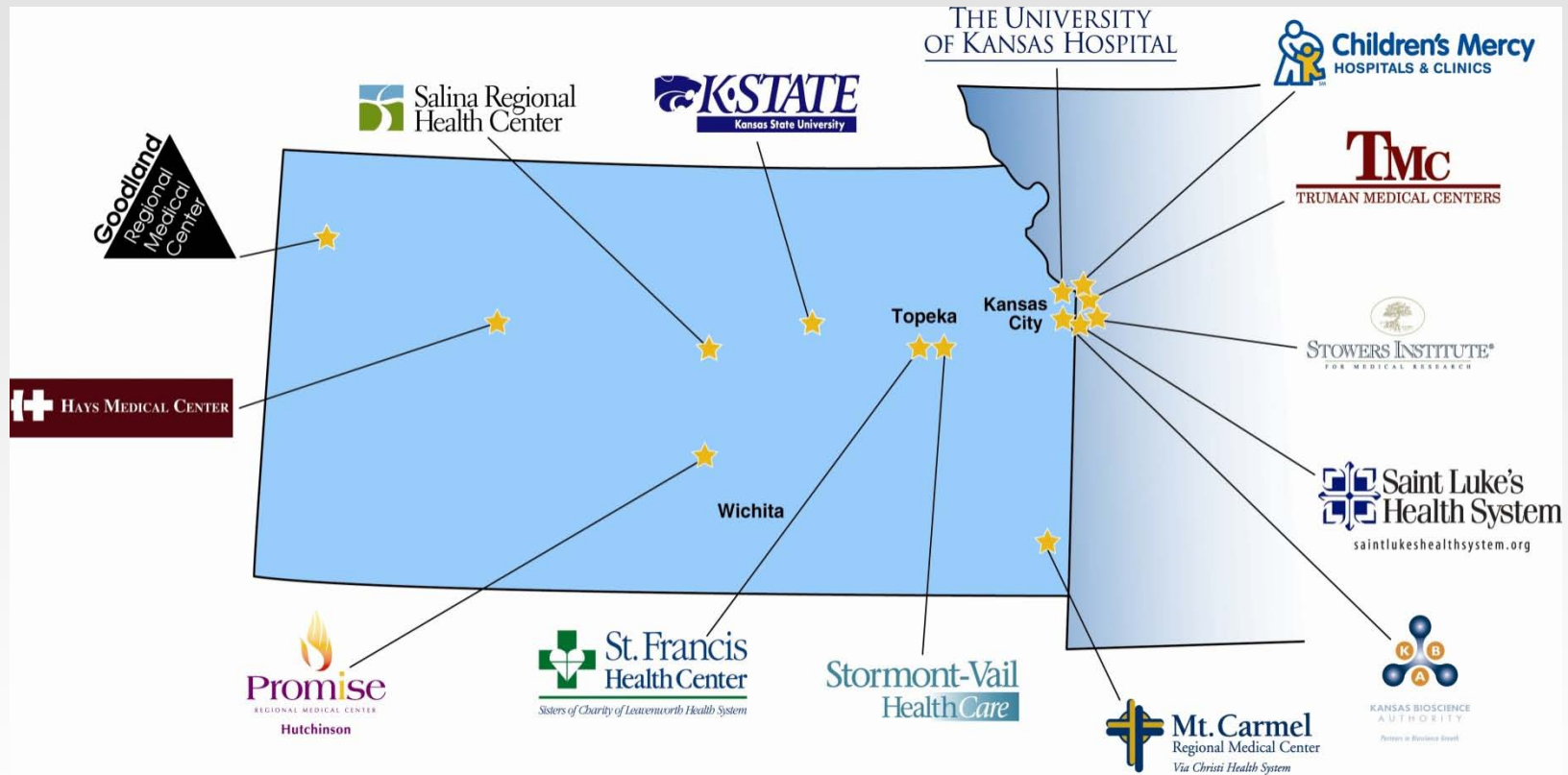
- Research Designation
 - Discover the nature of cancer
 - Development of new approaches for the prevention, diagnosis and treatment of cancer
- Clinical Services: Deliver medical advances to patients and their families
 - Reach out to underserved populations
- Educate Healthcare Professionals and the Public
- Outreach Programs: Resource on local, regional and national level



Designation = Economic Engine



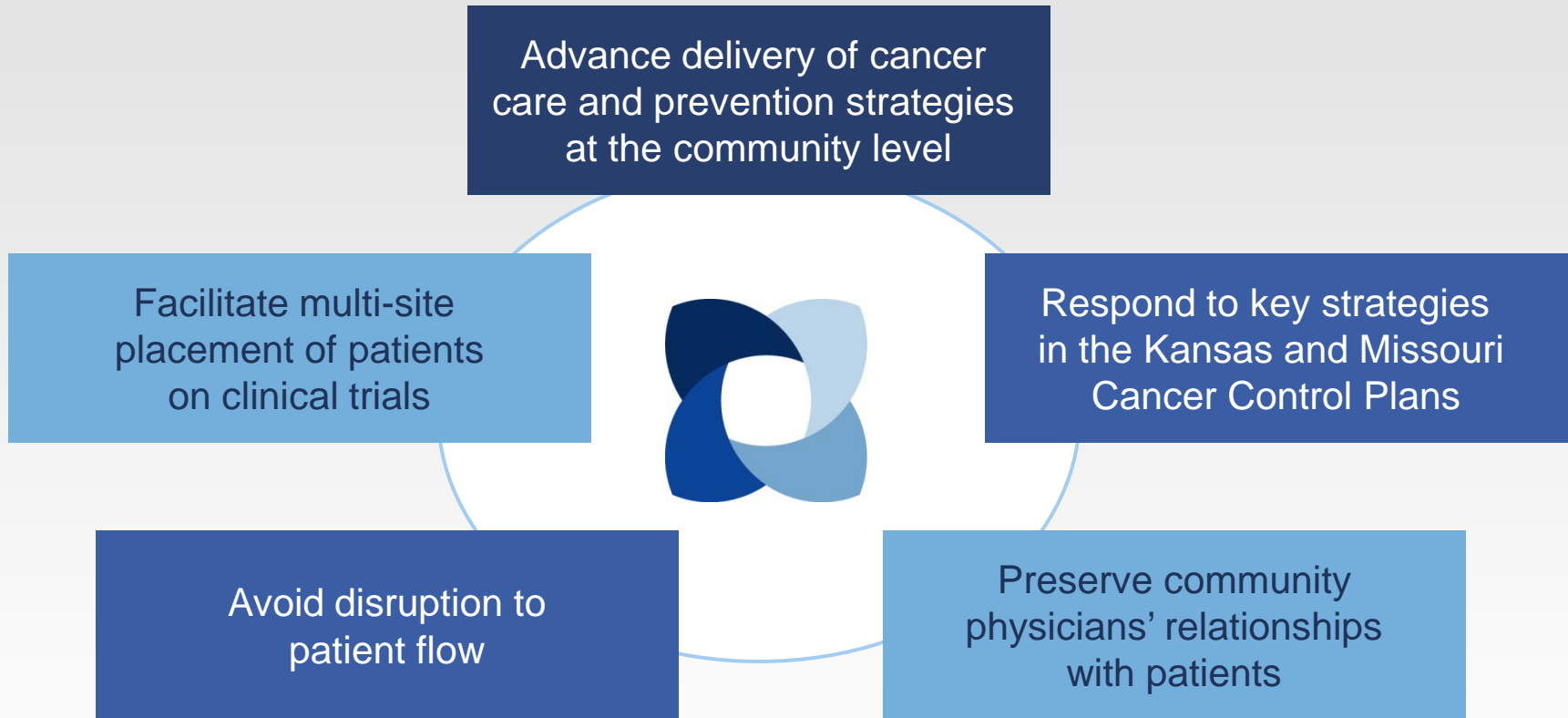
Midwest Cancer Alliance Collaboration!



Access to clinical trials close to home



Core Principles



Summary

- Only research institutions eligible to apply to NCI
- MCA is a research collaboration
- Our responsibility to collaborate – in best interest of patients, region
- Goal to raise the bar for research at all partner sites



From a researcher's perspective...



Why is Rural Research Important?

- Opportunity to shine the spotlight on issues relevant to rural communities and rural practice
- Competitive edge to grant applications
- Allows rural health care professionals the opportunity to participate in research
- Identify variations in patterns or practice that might inform improvement in care



Importance--continued

- Work in multiple, geographically distinct communities which can provide unique research methodologies
- Demonstrate to everyone that scholarship has no geographic boundaries
- See and taste the diversity of Kansas



Advantages of a Research Network

- Ability to respond to opportunities quickly
- Competitive advantage
- Experienced partners
- Contribute to quality improvement initiatives
- Better ideas for research and practice (bedside to bench)



Current Rural Research

- Prevalence of Epilepsy in Rural Kansas
- Pediatric Epilepsy and Development Disabilities
- Connect2Quit
- Kan Quit II
- Breast Cancer Survivorship
- Colorectal Cancer and Decision Making



From your perspective, what do we need to understand?

